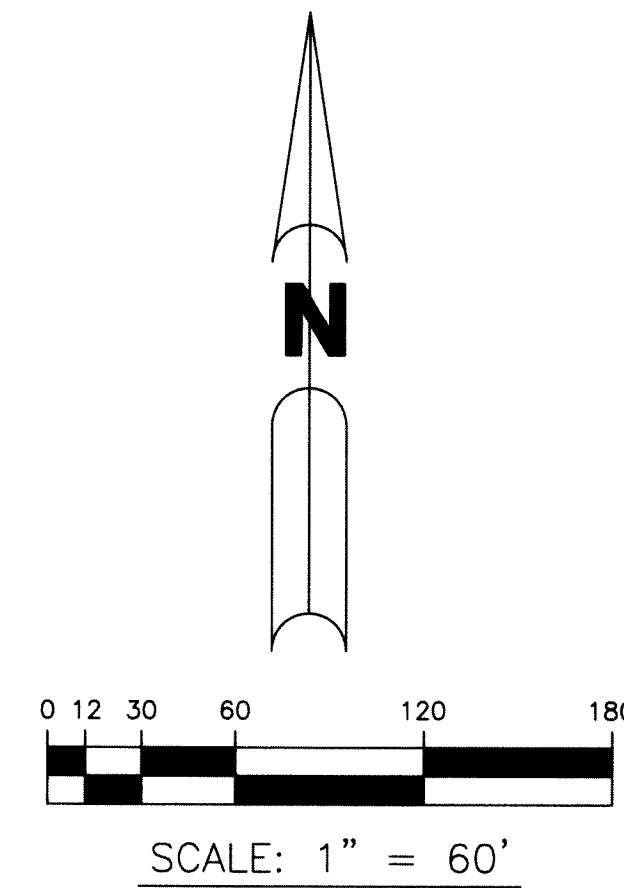
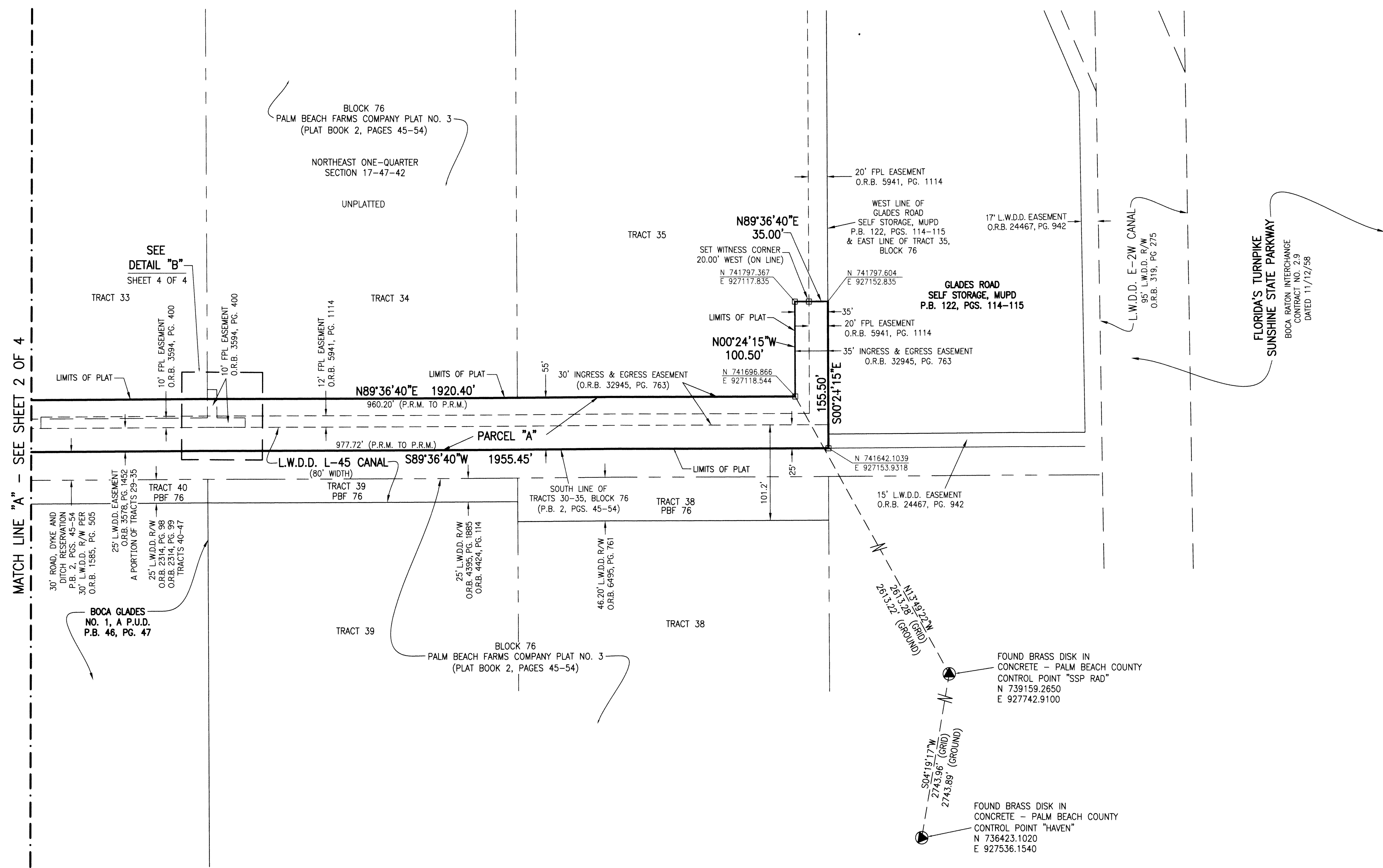


# BOCA RATON GOLF COURSE - CITY PARCEL

BEING A REPLAT OF A PORTION OF TRACTS 30 THROUGH 35, BLOCK 76, PALM BEACH FARMS COMPANY PLAT NO. 3, ACCORDING TO THE PLAT THEREOF, AS RECORDED IN PLAT BOOK 2, PAGES 45 THROUGH 54, OF THE PUBLIC RECORDS OF PALM BEACH COUNTY, FLORIDA, LYING IN SECTION 17, TOWNSHIP 47 SOUTH, RANGE 42 EAST.

SHEET 3 OF 4

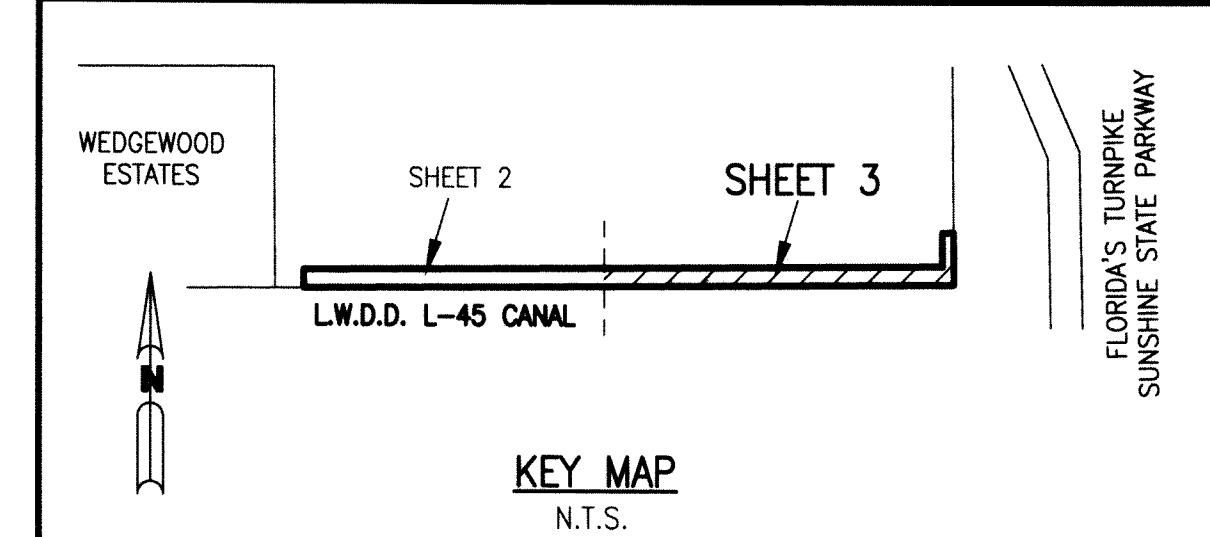
188



- LEGEND:**
- - SET PERMANENT REFERENCE MONUMENT  
4"x4" CONCRETE MONUMENT WITH  
1.5" DISK STAMPED L.B. #7741
  - - FOUND PERMANENT REFERENCE MONUMENT  
4"x4" CONCRETE MONUMENT WITH  
1.5" DISK STAMPED L.B. #7741
  - C - CENTERLINE
  - D.B. - DEED BOOK
  - F.P.L. - FLORIDA POWER & LIGHT
  - L.B. - LICENSED BUSINESS
  - L.W.D.D. - LAKE WORTH DRAINAGE DISTRICT
  - N.T.S. - NOT TO SCALE
  - O.R.B. - OFFICIAL RECORD BOOK
  - P.B. - PLAT BOOK
  - PBCUE - PALM BEACH COUNTY UTILITY EASEMENT
  - PBF 76 - BLOCK 76  
PALM BEACH FARMS CO. PLAT NO. 3,  
P.B. 2, PGS. 45-54
  - PG. - PAGE
  - P.O.B. - POINT OF BEGINNING
  - P.O.C. - POINT OF COMMENCEMENT
  - P.S.M. - PROFESSIONAL SURVEYOR AND MAPPER
  - PUD - PLANNED UNIT DEVELOPMENT
  - P.U.D. - PLANNED UNIT DEVELOPMENT
  - R.D.&D. - ROAD, DYKE & DITCH RESERVATION
  - R/W - RIGHT-OF-WAY
  - S.T. - SURVEY TIE
  - U.E. - UTILITY EASEMENT

**NOTES:**  
 COORDINATES SHOWN ARE GRID COORDINATES DATUM = NAD 83 (1990 ADJUSTMENT)  
 ZONE = FLORIDA EAST ZONE  
 LINEAR UNIT = U.S. SURVEY FEET  
 COORDINATE SYSTEM = 1983 STATE PLANE TRANSVERSE MERCATOR PROJECTION  
 ALL DISTANCES ARE GROUND (UNLESS OTHERWISE NOTED)  
 SCALE FACTOR = 1.00002408  
 PLAT BEARING = GRID BEARING  
 GROUND DISTANCE X SCALE FACTOR = GRID DISTANCE

THIS INSTRUMENT PREPARED BY  
 PERRY C. WHITE, P.S.M. 4213,  
 STATE OF FLORIDA  
 SAND & HILLS SURVEYING, INC.  
 8461 LAKE WORTH ROAD, SUITE 410  
 LAKE WORTH, FLORIDA  
 33467 LB-7741



KEY MAP  
 N.T.S.